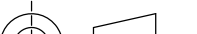

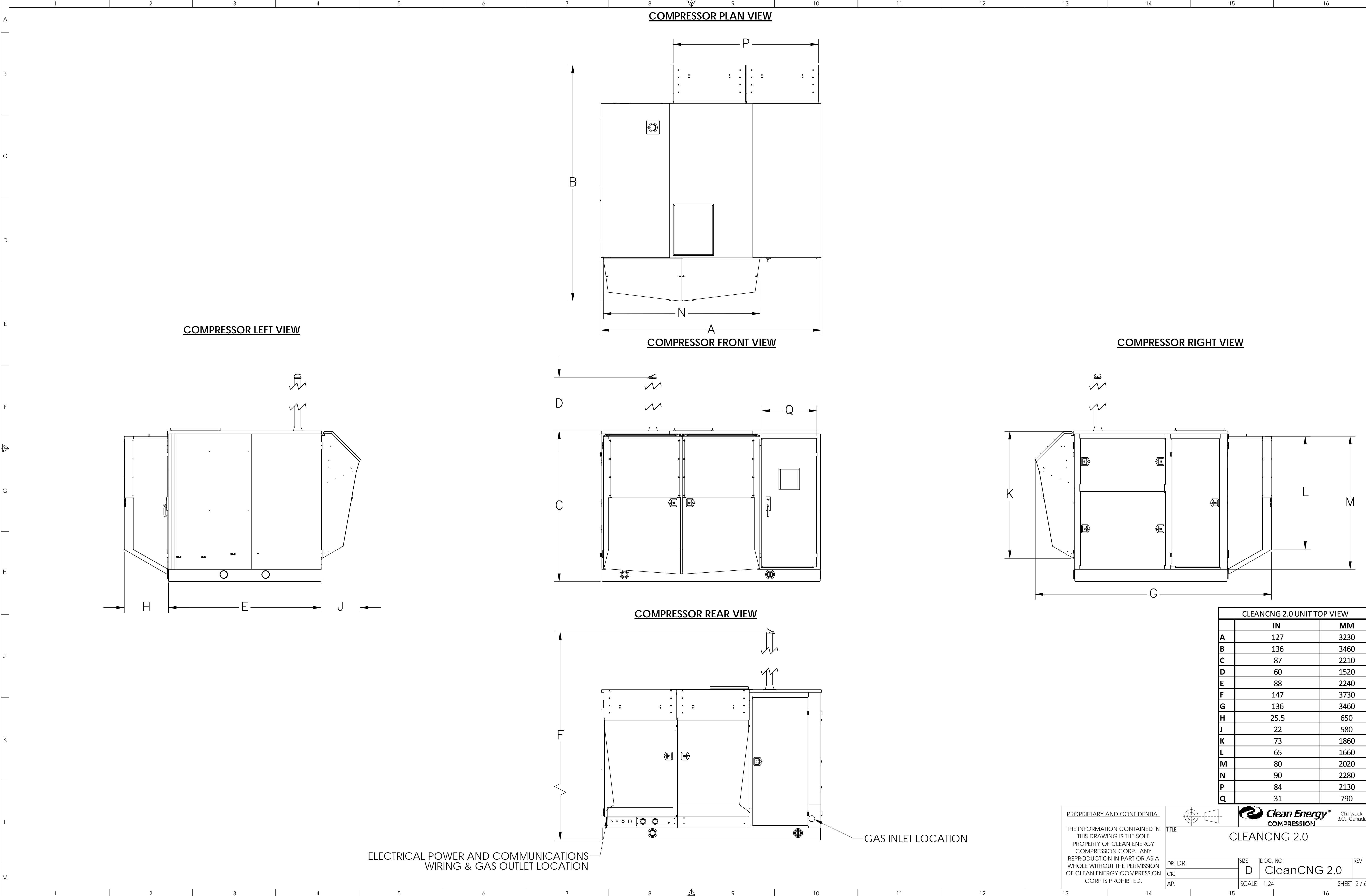


NOTE:
APPROXIMATE WEIGHT: 17,000 LBS (7711KG)

<u>PROPRIETARY AND CONFIDENTIAL</u>		 Clean Energy* COMPRESSION	Chilliwack, B.C., Canada
THE INFORMATION CONTAINED IN THIS DRAWING IS THE SOLE PROPERTY OF CLEAN ENERGY COMPRESSION CORP. ANY REPRODUCTION IN PART OR AS A WHOLE WITHOUT THE PERMISSION OF CLEAN ENERGY COMPRESSION CORP IS PROHIBITED.	TITLE CLEANCNG 2.0		
	DR DR	SIZE	DOC. NO.
	CK	D	CleanCNG 2.0
	AP	SCALE 1:24	SHEET 1 / 6



COMPRESSOR PLAN VIEW

COMPRESSOR FRONT VIEW

COMPRESSOR LEFT VIEW

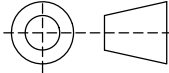
COMPRESSOR RIGHT VIEW

COMPRESSOR REAR VIEW

CLEANCNG 2.0 UNIT TOP VIEW		
	IN	MM
A	127	3230
B	136	3460
C	87	2210
D	60	1520
E	88	2240
F	147	3730
G	136	3460
H	25.5	650
J	22	580
K	73	1860
L	65	1660
M	80	2020
N	90	2280
P	84	2130
Q	31	790

PROPRIETARY AND CONFIDENTIAL

THE INFORMATION CONTAINED IN THIS DRAWING IS THE SOLE PROPERTY OF CLEAN ENERGY COMPRESSION CORP. ANY REPRODUCTION IN PART OR AS A WHOLE WITHOUT THE PERMISSION OF CLEAN ENERGY COMPRESSION CORP IS PROHIBITED.



TITLE



Chilliwack, B.C., Canada

CLEANCNG 2.0

DR | DR

CK |

AP |

SIZE

DOC. NO

REV

D

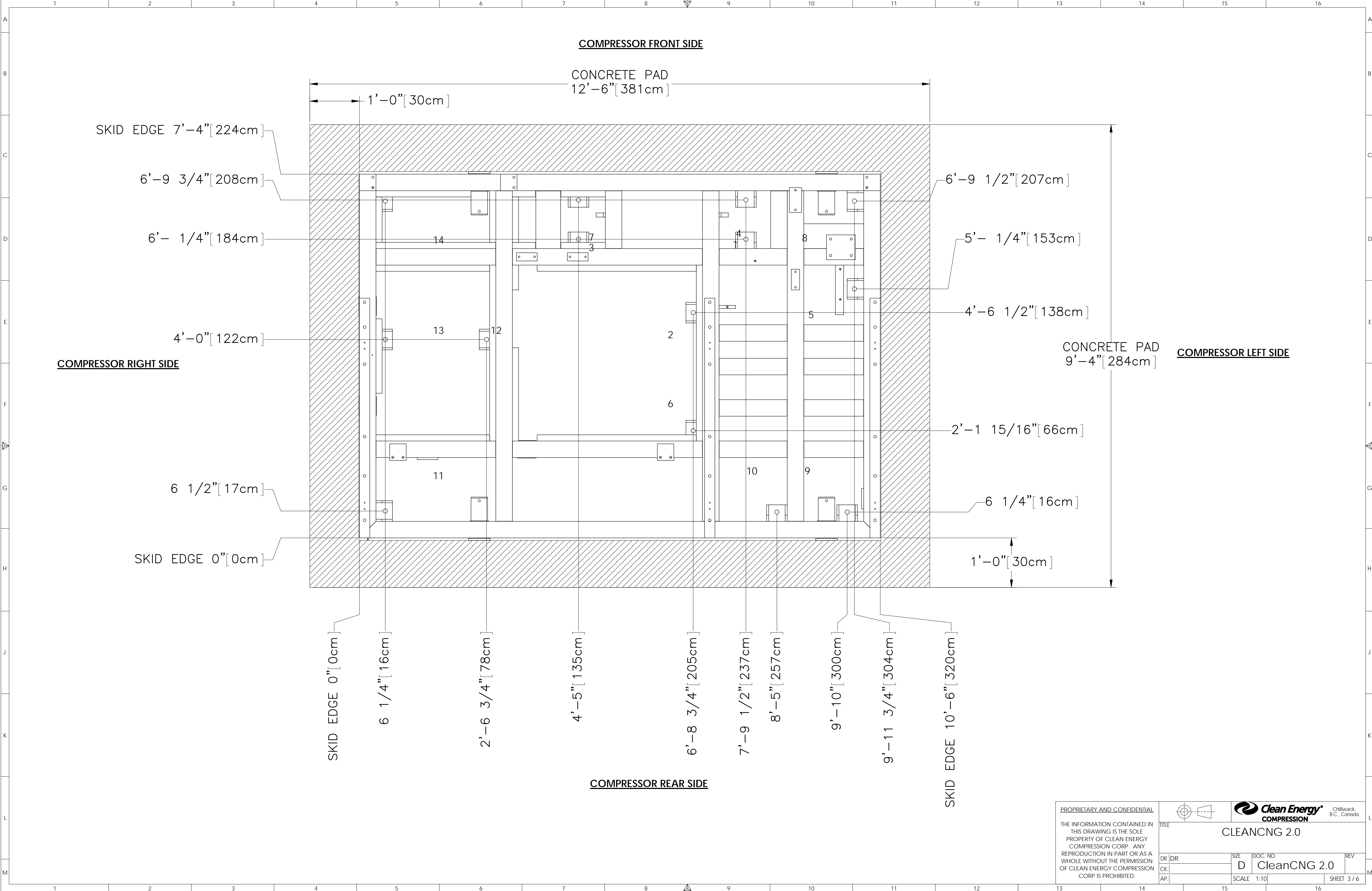
CleanCNG 2.0

SCALE 1:24

SHEET 2 / 6

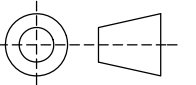
GAS INLET LOCATION

ELECTRICAL POWER AND COMMUNICATIONS WIRING & GAS OUTLET LOCATION



PROPRIETARY AND CONFIDENTIAL

THE INFORMATION CONTAINED IN THIS DRAWING IS THE SOLE PROPERTY OF CLEAN ENERGY COMPRESSION CORP. ANY REPRODUCTION IN PART OR AS A WHOLE WITHOUT THE PERMISSION OF CLEAN ENERGY COMPRESSION CORP IS PROHIBITED.

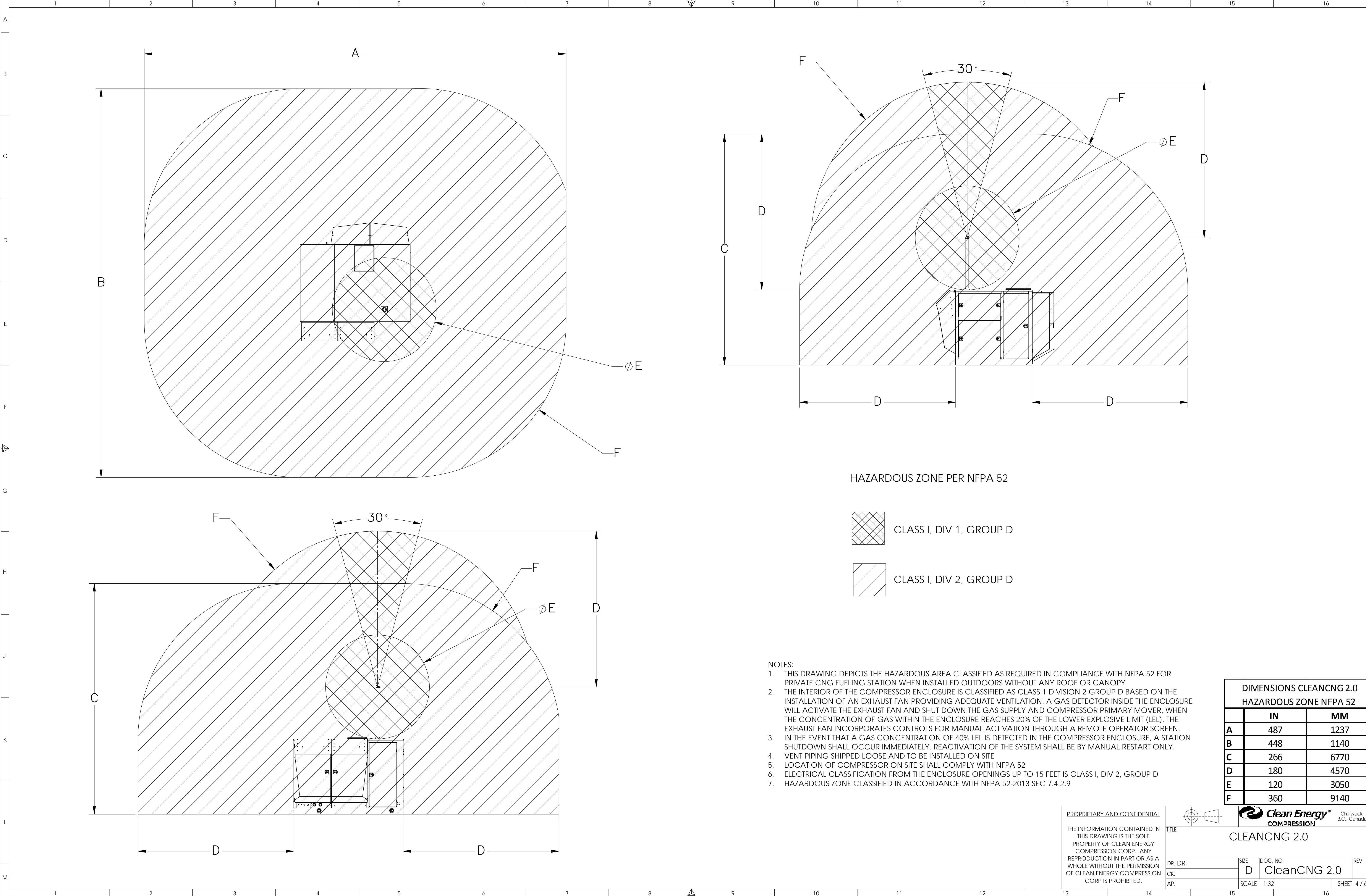


CLEANCNG 2.0

DR | DR
CK |
AP |

SIZE | DOC. NO.
D | CleanCNG 2.0

REV
SHEET 3 / 6



HAZARDOUS ZONE PER NFPA 52

- CLASS I, DIV 1, GROUP D
- CLASS I, DIV 2, GROUP D

NOTES:

- THIS DRAWING DEPICTS THE HAZARDOUS AREA CLASSIFIED AS REQUIRED IN COMPLIANCE WITH NFPA 52 FOR PRIVATE CNG FUELING STATION WHEN INSTALLED OUTDOORS WITHOUT ANY ROOF OR CANOPY
- THE INTERIOR OF THE COMPRESSOR ENCLOSURE IS CLASSIFIED AS CLASS 1 DIVISION 2 GROUP D BASED ON THE INSTALLATION OF AN EXHAUST FAN PROVIDING ADEQUATE VENTILATION. A GAS DETECTOR INSIDE THE ENCLOSURE WILL ACTIVATE THE EXHAUST FAN AND SHUT DOWN THE GAS SUPPLY AND COMPRESSOR PRIMARY MOVER, WHEN THE CONCENTRATION OF GAS WITHIN THE ENCLOSURE REACHES 20% OF THE LOWER EXPLOSIVE LIMIT (LEL). THE EXHAUST FAN INCORPORATES CONTROLS FOR MANUAL ACTIVATION THROUGH A REMOTE OPERATOR SCREEN.
- IN THE EVENT THAT A GAS CONCENTRATION OF 40% LEL IS DETECTED IN THE COMPRESSOR ENCLOSURE, A STATION SHUTDOWN SHALL OCCUR IMMEDIATELY. REACTIVATION OF THE SYSTEM SHALL BE BY MANUAL RESTART ONLY.
- VENT PIPING SHIPPED LOOSE AND TO BE INSTALLED ON SITE
- LOCATION OF COMPRESSOR ON SITE SHALL COMPLY WITH NFPA 52
- ELECTRICAL CLASSIFICATION FROM THE ENCLOSURE OPENINGS UP TO 15 FEET IS CLASS I, DIV 2, GROUP D
- HAZARDOUS ZONE CLASSIFIED IN ACCORDANCE WITH NFPA 52-2013 SEC 7.4.2.9

DIMENSIONS CLEANCNG 2.0 HAZARDOUS ZONE NFPA 52		
	IN	MM
A	487	1237
B	448	1140
C	266	6770
D	180	4570
E	120	3050
F	360	9140

PROPRIETARY AND CONFIDENTIAL

THE INFORMATION CONTAINED IN THIS DRAWING IS THE SOLE PROPERTY OF CLEAN ENERGY COMPRESSION CORP. ANY REPRODUCTION IN PART OR AS A WHOLE WITHOUT THE PERMISSION OF CLEAN ENERGY COMPRESSION CORP IS PROHIBITED.

TITLE

DR | DR

CK |

AP |



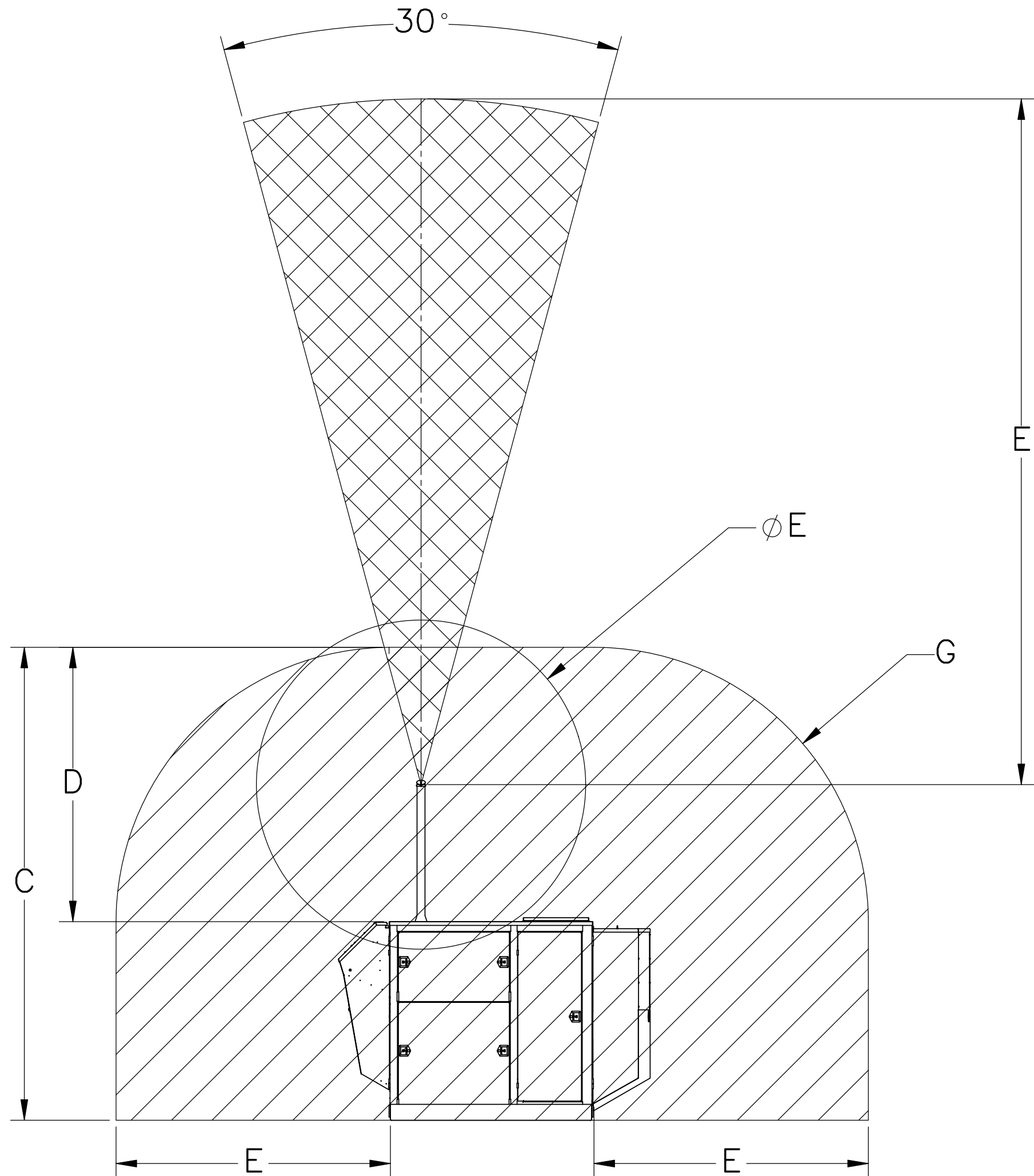
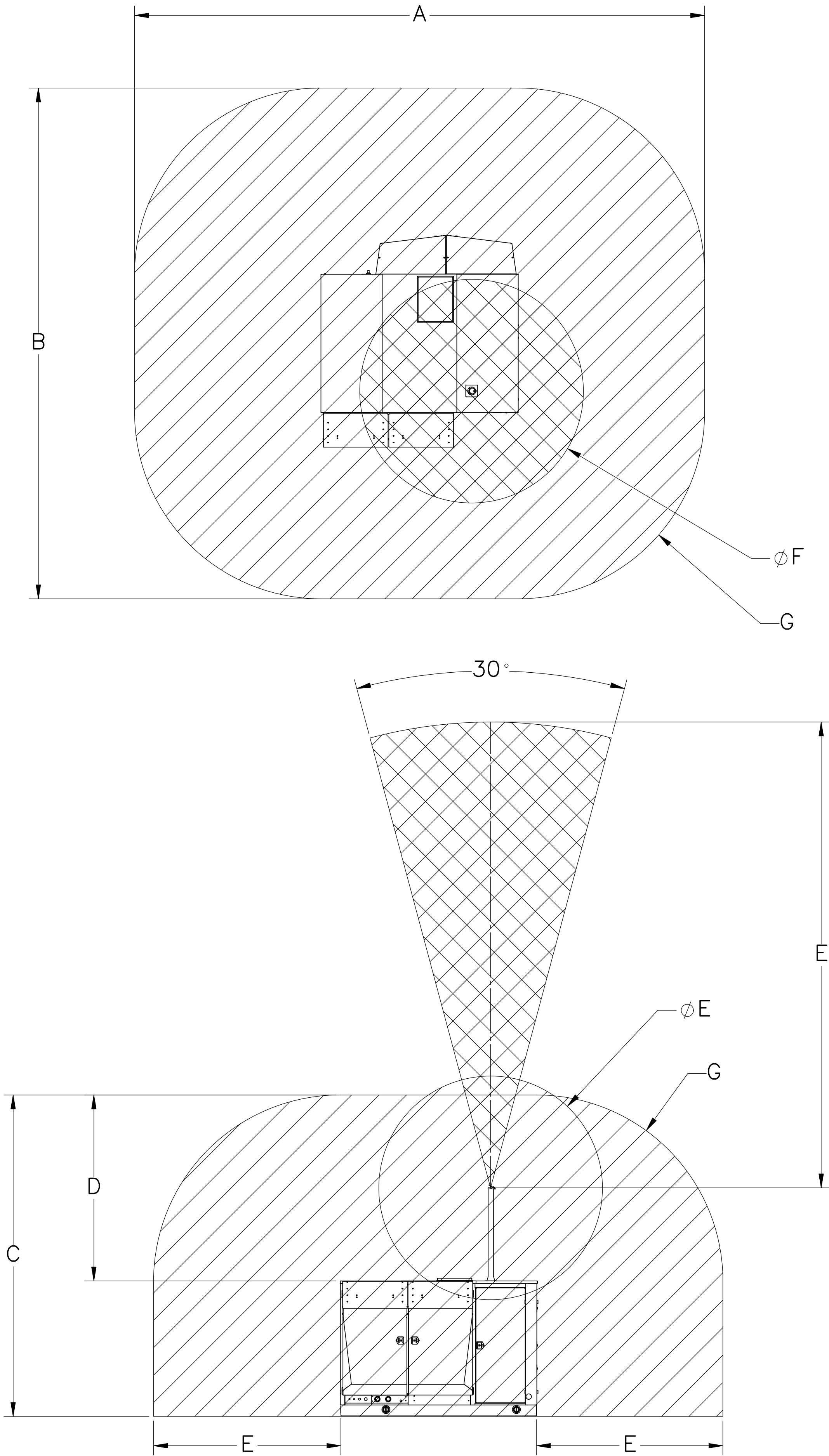
CLEANCNG 2.0

SIZE: D

DOC. NO: CleanCNG 2.0

SCALE: 1:32

SHEET: 4 / 6



HAZARDOUS ZONE PER CSA B108

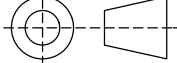
- CLASS I, ZONE 1, GROUP IIA
- CLASS I, ZONE 2, GROUP IIA

- NOTES:
- THIS DRAWING DEPICTS THE HAZARDOUS AREA CLASSIFIED AS REQUIRED IN COMPLIANCE WITH CSA B108 FOR PRIVATE CNG FUELING STATION WHEN INSTALLED OUTDOORS WITHOUT ANY ROOF OR CANOPY.
 - THE INTERIOR OF THE COMPRESSOR ENCLOSURE IS CLASSIFIED AS CLASS I ZONE 2 GROUP IIA (DIV. 2 GROUP D) BASED ON THE INSTALLATION OF AN EXHAUST FAN PROVIDING ADEQUATE VENTILATION. A GAS DETECTOR INSIDE THE ENCLOSURE WILL ACTIVATE THE EXHAUST FAN AND SHUT DOWN THE GAS SUPPLY AND COMPRESSOR PRIMARY MOVER, WHEN THE CONCENTRATION OF GAS WITHIN THE ENCLOSURE REACHES 10% OF THE LOWER EXPLOSIVE LIMIT (LEL). THE EXHAUST FAN INCORPORATES CONTROLS FOR MANUAL ACTIVATION THROUGH A REMOTE OPERATOR SCREEN.
 - IN THE EVENT THAT A GAS CONCENTRATION OF 20% LEL IS DETECTED IN THE COMPRESSOR ENCLOSURE, A STATION SHUTDOWN SHALL OCCUR IMMEDIATELY. REACTIVATION OF THE SYSTEM SHALL BE BY MANUAL RESTART ONLY.
 - VENT PIPING SHIPPED LOOSE AND TO BE INSTALLED ON SITE.
 - LOCATION OF COMPRESSOR ON SITE SHALL COMPLY WITH CSA B108.
 - ELECTRICAL CLASSIFICATION FROM THE ENCLOSURE OPENINGS UP TO 10 FEET IS CLASS I, ZONE 2 GROUP II A (DIV 2, GROUP D).
 - HAZARDOUS ZONE CLASSIFIED IN ACCORANCE WITH CSA B108-2006 SEC 4.2 & 7.15.

DIMENSIONS CLEANCNG 2.0 HAZARDOUS ZONE CSA B108		
	IN	MM
A	366	9320
B	329	8360
C	207	5260
D	300	7620
E	120	3050
F	144	3660
G	240	6100

PROPRIETARY AND CONFIDENTIAL

THE INFORMATION CONTAINED IN THIS DRAWING IS THE SOLE PROPERTY OF CLEAN ENERGY COMPRESSION CORP. ANY REPRODUCTION IN PART OR AS A WHOLE WITHOUT THE PERMISSION OF CLEAN ENERGY COMPRESSION CORP IS PROHIBITED.



CLEANCNG 2.0

DR | DR

CK |

AP |

SIZE

DOC. NO.

REV

D

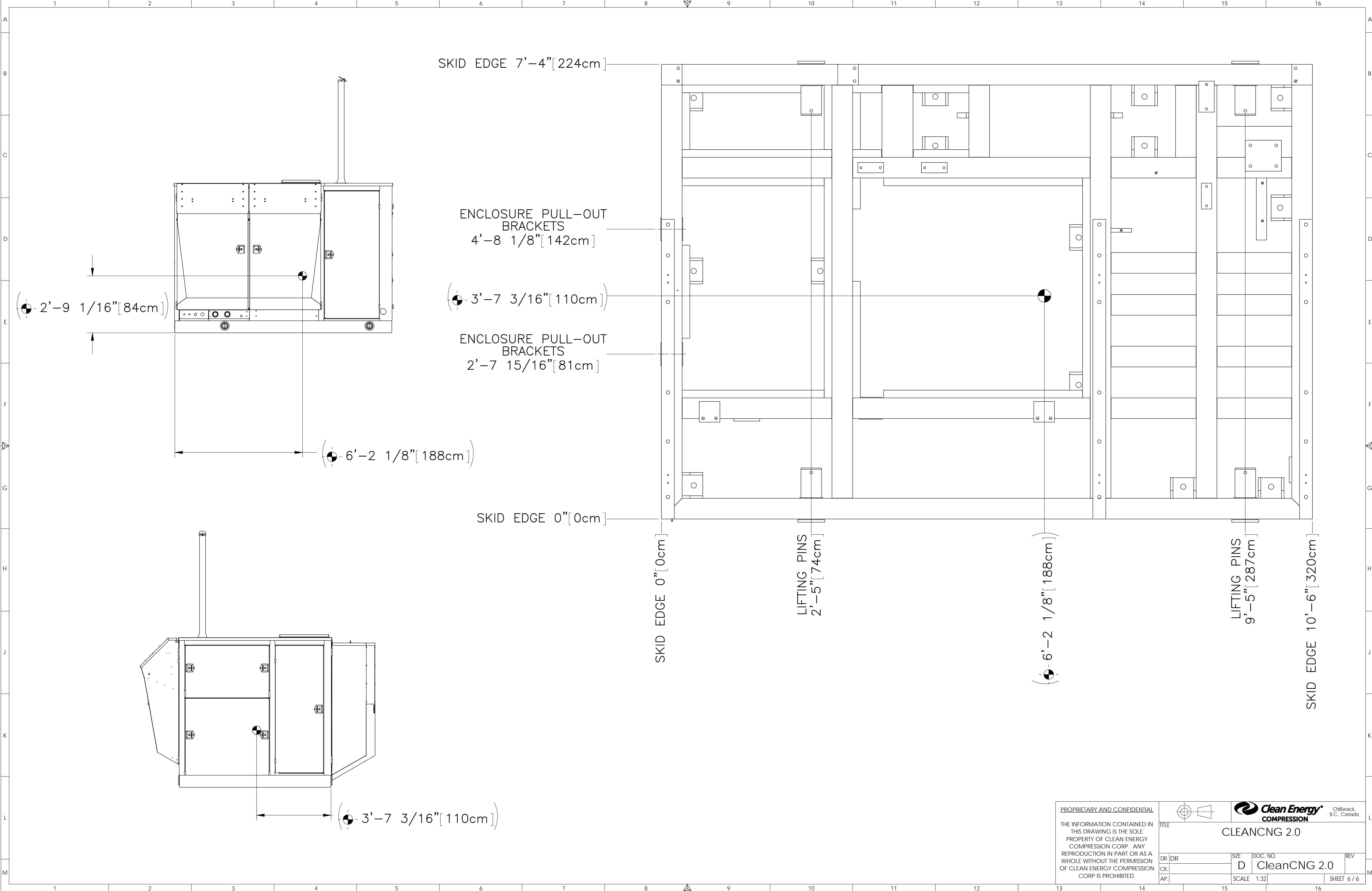
CleanCNG 2.0

SCALE

1:32

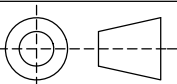
SHEET

5 / 6



PROPRIETARY AND CONFIDENTIAL

THE INFORMATION CONTAINED IN THIS DRAWING IS THE SOLE PROPERTY OF CLEAN ENERGY COMPRESSION CORP. ANY REPRODUCTION IN PART OR AS A WHOLE WITHOUT THE PERMISSION OF CLEAN ENERGY COMPRESSION CORP IS PROHIBITED.



CLEANCNG 2.0

DR | DR
CK |
AP |

SIZE | DOC. NO.
D | CleanCNG 2.0

SCALE | 1:32
SHEET 6 / 6